

# FOR SALE MEDICAL OFFICE CONDOS

4 & 6 EXECUTIVE PARK COURT  
GERMANTOWN, MD 20874

## PURCHASE ONE OR BOTH!

**SIZE:** #4 & #6 together approx. 1,910 square feet.

- #4 Executive Park Court approx. 954 saleable SF.
- #6 Executive Park Court approx. 956 saleable SF.

### FEATURES:

- Finished medical suites featuring:
- Patient waiting areas.
- Business office with sliding glass window and check-in/check-out counter.
- Multiple exam rooms with sinks and counters.
- Doctor's consult rooms with windows.
- First floor suites with great natural light - NO STEPS!
- Abundant free parking at front door.

**PRICE:** Just \$325,000 to purchase each suite.

- Condo Fee just \$270/month, includes water/sewer, structural fire insurance, roof, exterior maintenance, professional management & more.
- #4 RE Taxes (7/1/25-6/30/26): \$3,352.99.
- #6 RE Taxes (7/1/25-6/30/26): \$3,359.87.

**CONTACT:**  
**JAY CLOGG**  
301.340.9400  
JAY@JAYCLOGG.COM



JAY CLOGG REALTY GROUP, INC.  
301.340.9400 · JAYCLOGG.COM  
110 N. WASHINGTON STREET  
ROCKVILLE, MD 20850

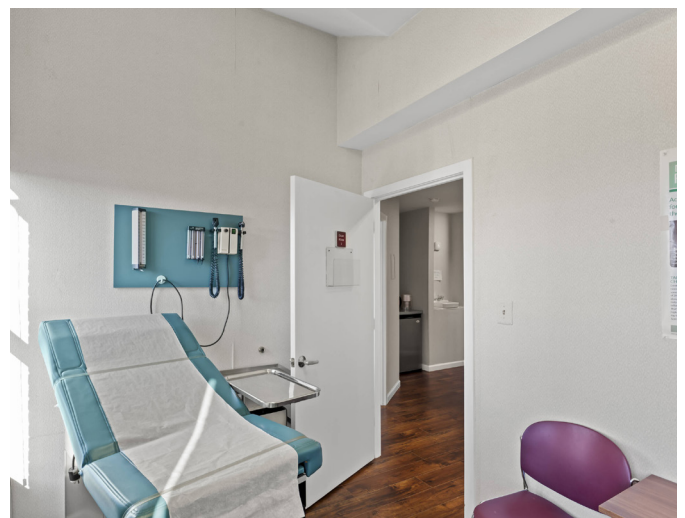
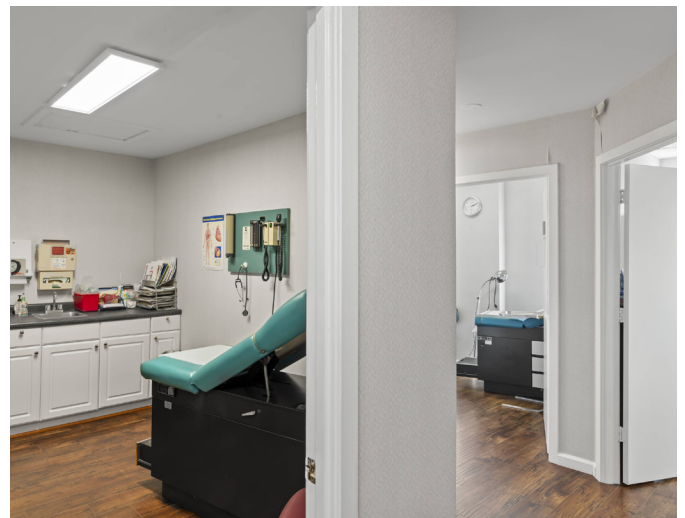
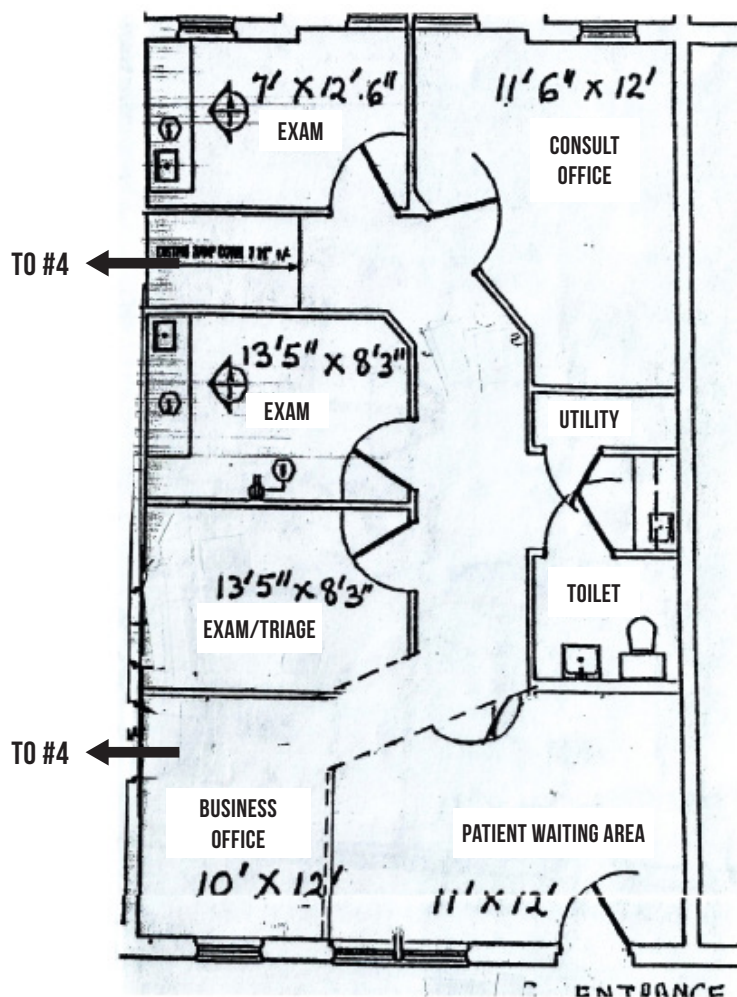


# MEDICAL OFFICE CONDOS FOR SALE

4 & 6 EXECUTIVE PARK COURT | GERMANTOWN, MD 20874



#6 EXISTING FLOOR PLAN:



JAY CLOGG REALTY GROUP, INC.

301.340.9400 · JAYCLOGG.COM | 110 N. WASHINGTON STREET | ROCKVILLE, MD 20850