

3416 OLANDWOOD
COURT, SUITE 209
OLNEY, MD 20832

OFFICE
CONDO
FOR LEASE

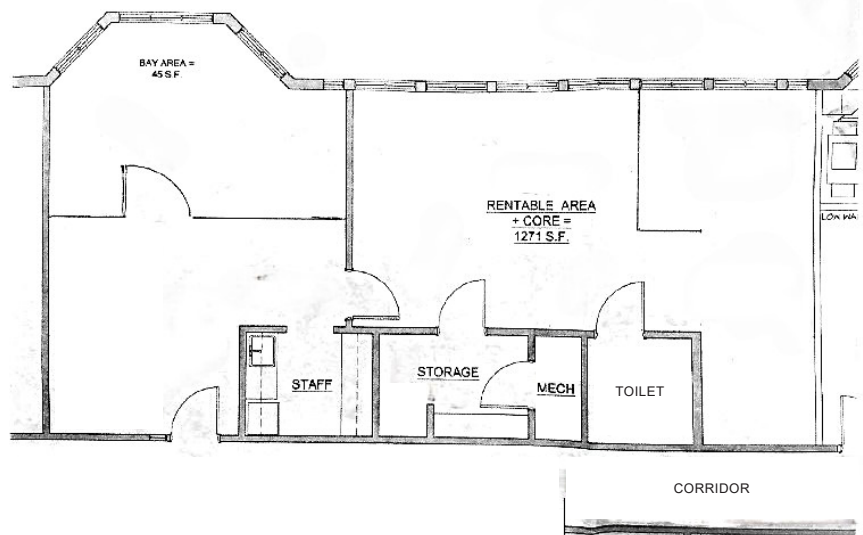


SIZE 1,271 rentable SF.

PRICE \$23/SF NNN.

- RE Taxes (7/1/25-6/30/26): \$4,466.36.
- Condo Fee: \$584/month.

FEATURES Space includes a reception area, mix of open plan office/bullpen space, conference room, kitchen, bathroom, and storage. See floorplan.



CONTACT:
JOHN ARENSMEYER
301.340.9400
JOHN@JAYCLOGG.COM

JAY CLOGG REALTY GROUP, INC.
110 N. WASHINGTON STREET
ROCKVILLE, MD 20850
301.340.9400 • JAYCLOGG.COM

C
JAY CLOGG
REALTY GROUP, INC.