

OFFICE CONDO FOR LEASE

2919-B OLNEY SANDY SPRING ROAD | OLNEY, MD 20832

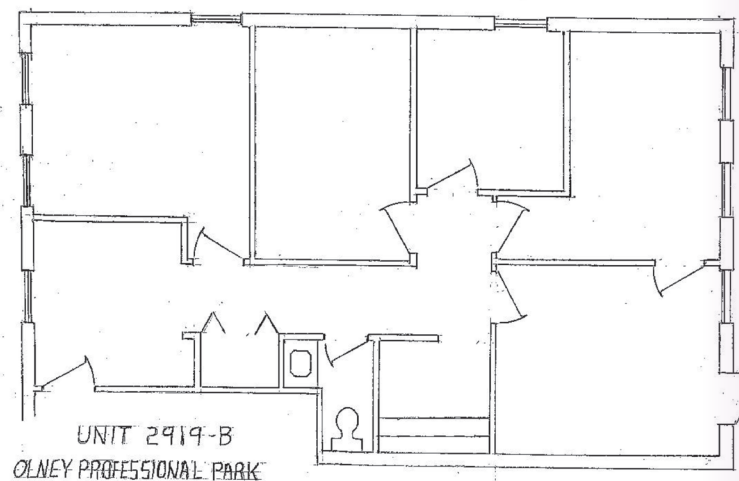


SIZE: 906 square feet.

PRICE: \$2,600/month, net of utilities and interior cleaning.

FEATURES:

- End unit office condominium in “move in” condition.
- Second floor walk up.
- Space includes reception area and five (5) private offices.



CONTACT:
JOHN ARENSMEYER
301.340.9400
JOHN@JAYCLOGG.COM



JAY CLOGG REALTY GROUP, INC.
110 N. WASHINGTON STREET
ROCKVILLE, MD 20850
301.340.9400 • JAYCLOGG.COM