

# OFFICE CONDO FOR LEASE

2911-C OLNEY SANDY  
SPRING ROAD  
OLNEY, MD 20832



## SIZE:

- Approx. 885 rentable square feet.

## FEATURES:

- Street level access.
- Space includes 2 windowed offices, kitchenette and open plan workspace.
- Available immediately.

## PRICE:

- \$3,150/month, net of utilities and cleaning.

## CONTACT:

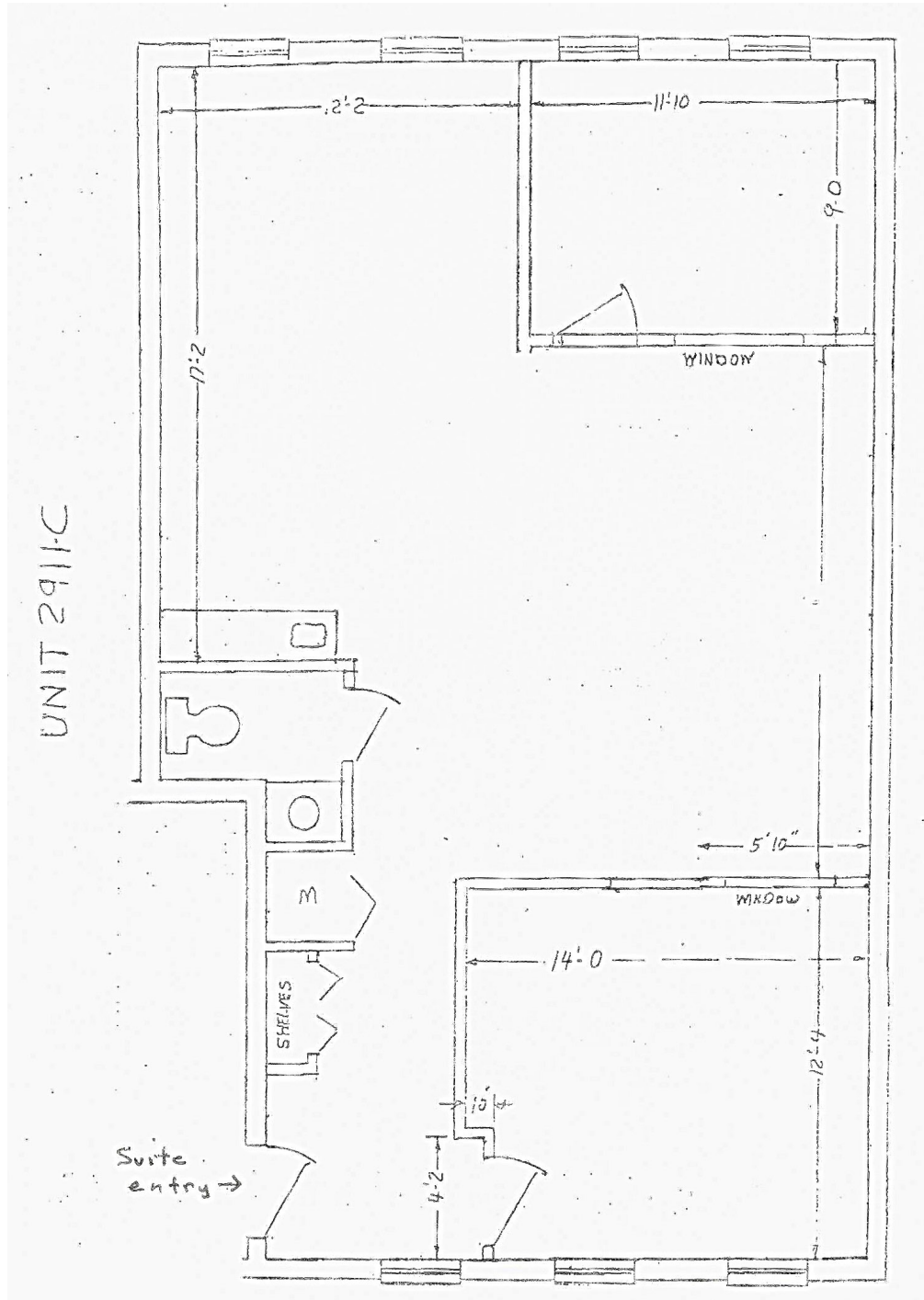
JOHN ARENSMEYER  
301.340.9400  
JOHN@JAYCLOGG.COM



JAY CLOGG REALTY GROUP, INC.  
110 N. WASHINGTON ST.  
ROCKVILLE, MD 20850  
301.340.9400 • JAYCLOGG.COM

# OFFICE CONDO FOR LEASE

2911-C OLNEY SANDY SPRING ROAD  
OLNEY, MD 20832



CONTACT:  
JOHN ARENSMEYER  
301.340.9400  
JOHN@JAYCLOGG.COM



JAY CLOGG REALTY GROUP, INC.  
110 N. WASHINGTON ST.  
ROCKVILLE, MD 20850  
301.340.9400 • JAYCLOGG.COM