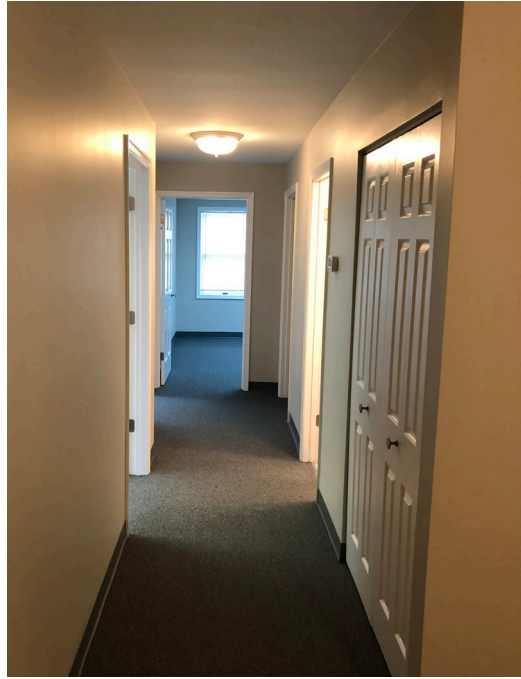


OFFICE CONDO FOR LEASE

2919-F OLNEY SANDY SPRING ROAD | OLNEY, MD 20832



SIZE: 878 SF

PRICE: \$1,900/month, net of utilities and cleaning.

FEATURES:

- MOVE IN CONDITION!
- Ground level end unit office condominium (accessible by stairs).
- Space includes a large interior office/conference room, 2 windowed offices and kitchen.

CONTACT:
JOHN ARENSMEYER
301.340.9400
JOHN@JAYCLOGG.COM



JAY CLOGG REALTY GROUP, INC.
110 N. WASHINGTON STREET
ROCKVILLE, MD 20850
301.340.9400 • JAYCLOGG.COM