



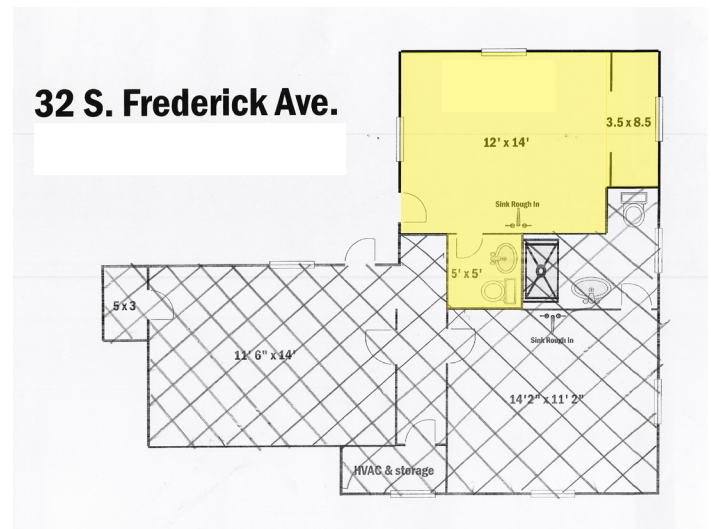
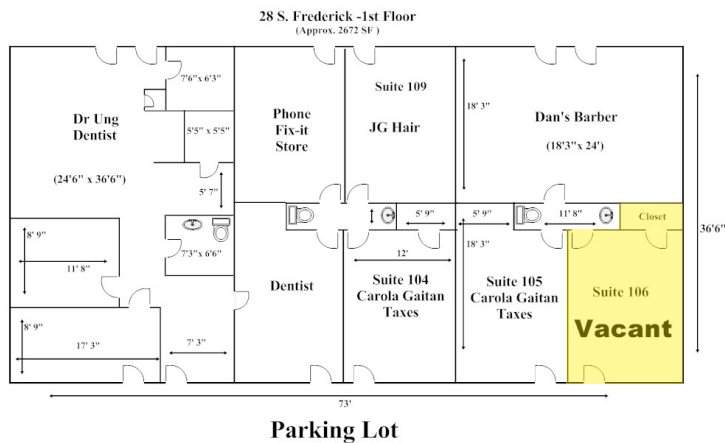
# OFFICE/RETAIL SPACE FOR LEASE

## 28-32 S. FREDERICK AVENUE

## GAITHERSBURG, MD 20877

**28 S. FREDERICK AVENUE, SUITE 106**  
Approx. 150 SF. \$600/mo. + utilities (\$50).

**32 S. FREDERICK AVENUE, SUITE 104**  
Approx. 235 SF. \$725/mo. + utilities (\$50).



**FEATURES** Great location on Route 355 and Cedar Lane. Lots of parking and good signage. Perfect for any office use. Monthly rent does not include utilities (approx. \$50/mo. per suite).

**CONTACT:**  
**RANDY DALY**  
301.340.9400  
RDALY95@AOL.COM

**JAY CLOGG**  
REALTY GROUP, INC.

**JAY CLOGG REALTY GROUP, INC.**  
301.340.9400 • JAYCLOGG.COM • @JAYCLOGG  
110 N. WASHINGTON STREET • ROCKVILLE, MD 20850