

3416 OLANDWOOD
COURT, SUITE 210
OLNEY, MD 20832

OFFICE CONDO
FOR SALE
OR LEASE



SIZE 2,002 rentable SF.

RENTAL RATE \$17.50/SF NNN.

SALE PRICE \$610,000.00.

FEATURES Space includes a reception area, mix of open plan office/bullpen space, private offices, conference room, kitchen, bathroom, and storage. RE Taxes (7/1/23-6/30/24): \$6,519.48. Condo Fee: \$870/month. See attached floorplan.

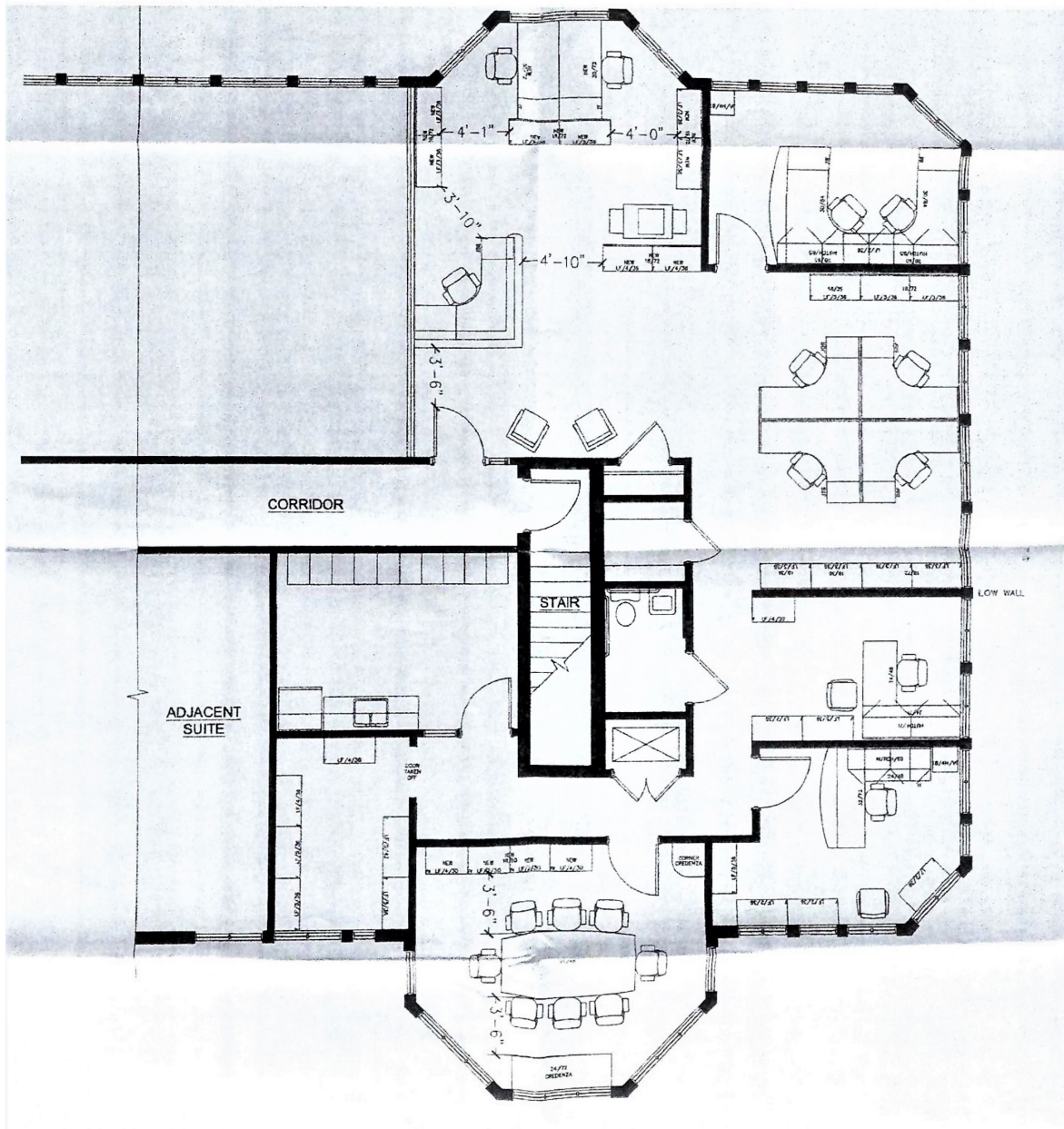
CONTACT:
JOHN ARENSMEYER
301.340.9400
JOHN@JAYCLOGG.COM

JAY CLOGG REALTY GROUP, INC.
110 N. WASHINGTON STREET
ROCKVILLE, MD 20850
301.340.9400 • JAYCLOGG.COM



3416 OLANDWOOD COURT, SUITE 210 OLNEY, MD 20832

OFFICE CONDO FOR SALE OR LEASE



CONTACT:
JOHN ARENSMEYER
301.340.9400
JOHN@JAYCLOGG.COM

JAY CLOGG REALTY GROUP, INC.
110 N. WASHINGTON STREET
ROCKVILLE, MD 20850
301.340.9400 • JAYCLOGG.COM

