

3416 OLANDWOOD
COURT, SUITE 210
OLNEY, MD 20832

OFFICE
CONDO FOR
LEASE



SIZE 2,002 rentable SF.

PRICE \$17.50/SF NNN.

FEATURES Space includes a reception area, mix of open plan office/bullpen space, private offices, conference room, kitchen, bathroom, and storage. See attached floorplan.

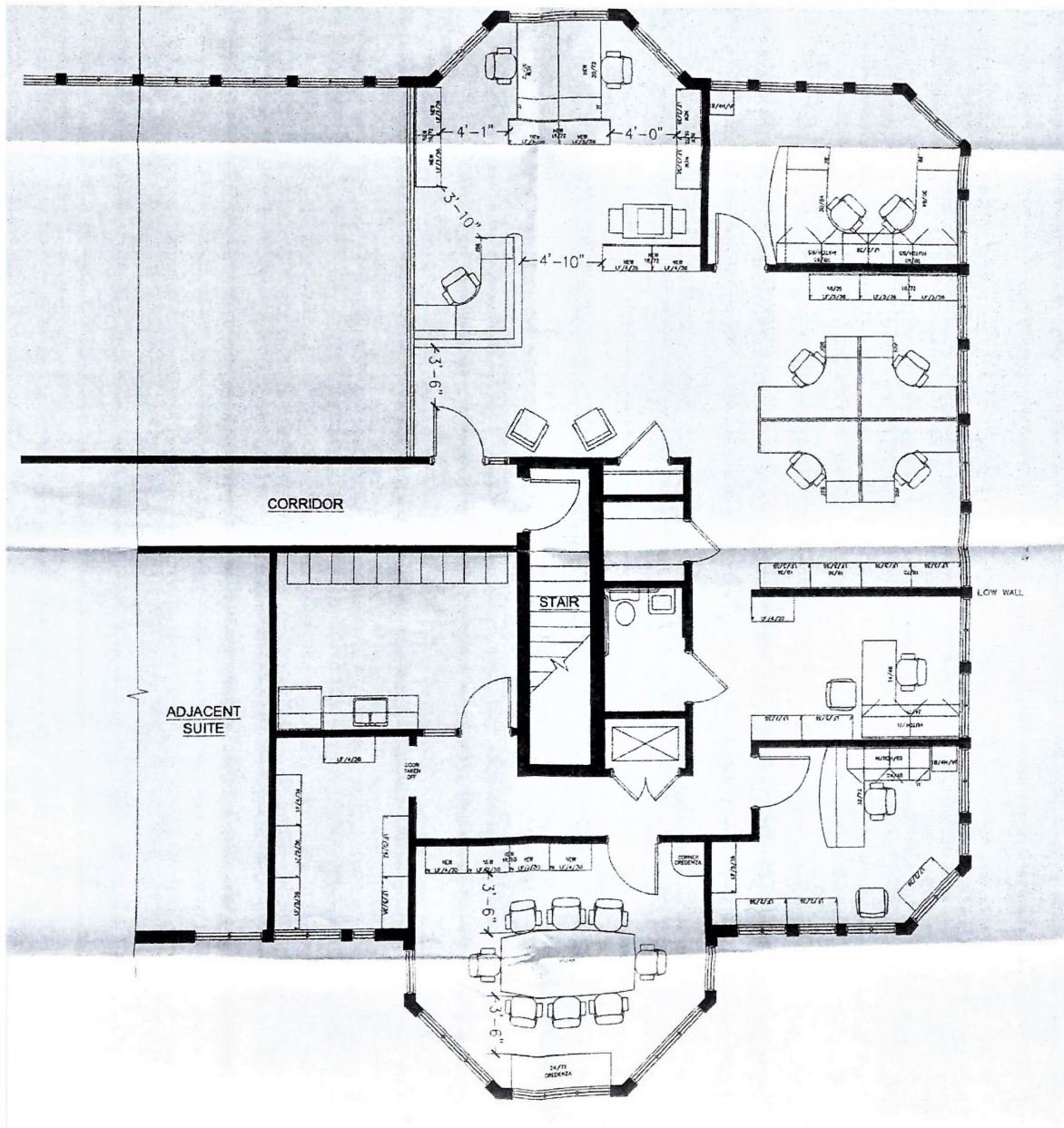
CONTACT:
JOHN ARENSMEYER
301.340.9400
JOHN@JAYCLOGG.COM

JAY CLOGG REALTY GROUP, INC.
110 N. WASHINGTON STREET
ROCKVILLE, MD 20850
301.340.9400 • JAYCLOGG.COM



3416 OLANDWOOD
COURT, SUITE 210
OLNEY, MD 20832

OFFICE
CONDO FOR
LEASE



CONTACT:
JOHN ARENSMEYER
301.340.9400
JOHN@JAYCLOGG.COM

JAY CLOGG REALTY GROUP, INC.
110 N. WASHINGTON STREET
ROCKVILLE, MD 20850
301.340.9400 • JAYCLOGG.COM

