

FOR LEASE BEAUTIFUL OFFICE SUITE IN GERMANTOWN, JUST OFF I-270

19785 CRYSTAL ROCK DRIVE, SUITE 307
GERMANTOWN, MD 20874



SIZE: Approx. 3,398 SF.

FEATURES: Corner space on top floor. Includes reception area with built-in desk & marble flooring, large windowed conference room, 7 private windowed offices, large open work area for 10 cubes, and nice kitchenette. Free parking, both covered and open available.

PRICE: \$25/SF, including base year taxes. Tenant pays utilities and real estate tax over base year, if any.

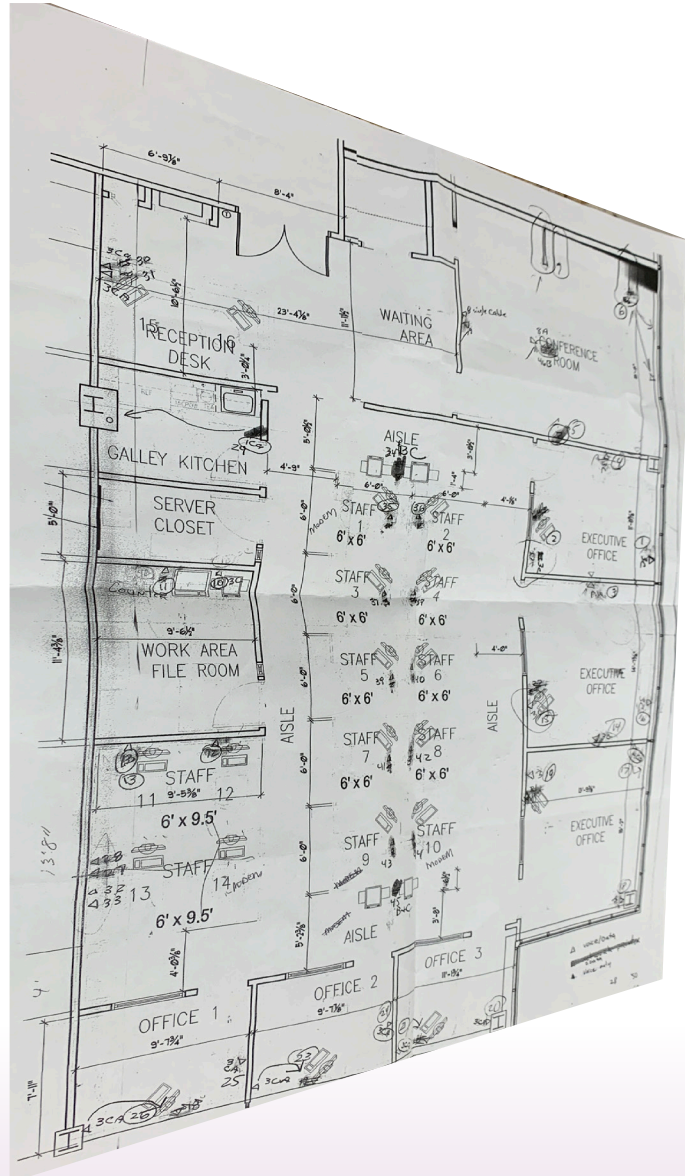
CONTACT:
JAY CLOGG
301.340.9400
JAY@JAYCLOGG.COM

JAY CLOGG REALTY GROUP, INC.
110 N. WASHINGTON STREET
ROCKVILLE, MD 20850
301.340.9400 • JAYCLOGG.COM



FOR LEASE BEAUTIFUL OFFICE SUITE IN GERMANTOWN, JUST OFF I-270

19785 CRYSTAL ROCK DRIVE, SUITE 307
GERMANTOWN, MD 20874



CONTACT:
JAY CLOGG
301.340.9400
JAY@JAYCLOGG.COM

JAY CLOGG REALTY GROUP, INC.
110 N. WASHINGTON STREET
ROCKVILLE, MD 20850
301.340.9400 • JAYCLOGG.COM

C
JAY CLOGG
REALTY GROUP, INC.